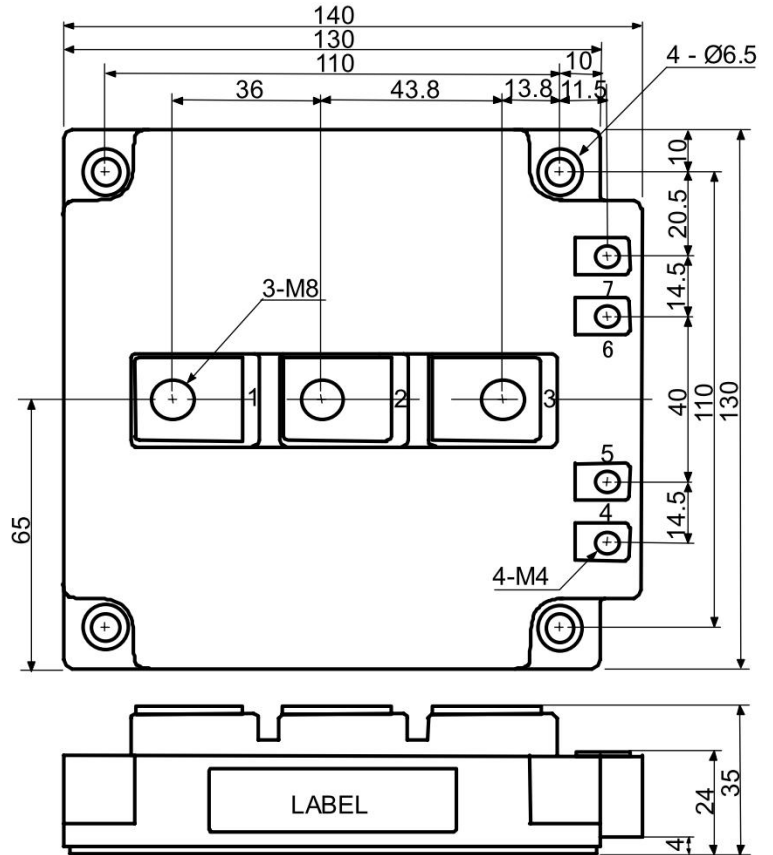
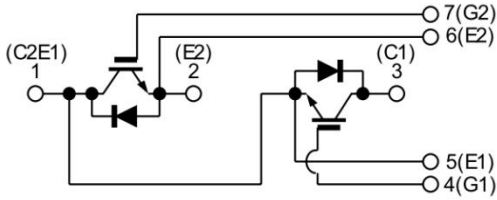


□ 回路図 : **CIRCUIT**

 □ 概略図 : **SCHEMATIC DIAGRAM**

Dimension: [mm]


 □ 最大定格 : **MAXIMUM RATINGS** (at  $T_c=25^\circ\text{C}$  unless otherwise specified)

Item		Symbol	Condition	Rated Value	Unit
IGBT	コレクタ・エミッタ間電圧 Collector-Emitter Voltage	$V_{CES}$	G-E Short	1200	V
	ゲート・エミッタ間電圧 Gate-Emitter Voltage	$V_{GES}$	C-E Short	$\pm 20$	V
	コレクタ電流 Collector Current	$I_C$	DC $T_c=85^\circ\text{C}$	600	A
		$I_{CP}$	Pulse $\leq 1\text{ms}$	1200	
コレクタ損失 Collector Power Dissipation	$P_C$	$T_j=175^\circ\text{C}$	3125	W	
		$T_j=150^\circ\text{C}$	2604		
FWD	繰り返しピーク逆電圧 Repetitive peak reverse voltage	$V_{RRM}$		1200	V
	順電流 Forward Current	$I_F$		600	A
		$I_{FM}$	Pulse $\leq 1\text{ms}$	1200	
最大接合温度 Maximum Junction Temperature		$T_{jMAX}$	瞬時動作(過負荷) Instantaneous Overload	175	$^\circ\text{C}$
接合温度範囲 Junction Temperature Range		$T_j$		$-40 \sim +150$	$^\circ\text{C}$
保存温度範囲 Storage Temperature Range		$T_{stg}$		$-40 \sim +125$	$^\circ\text{C}$
絶縁耐圧 Isolation Voltage		$V_{ISO}$	Terminal to Base AC, 1minute	2,500	V (RMS)
締め付けトルク Mounting Torque	Module Base to Heatsink	$F_{tor}$	M6	3	N · m
	Busbar to Main Terminal		M4	1.4	
			M8	10.5	

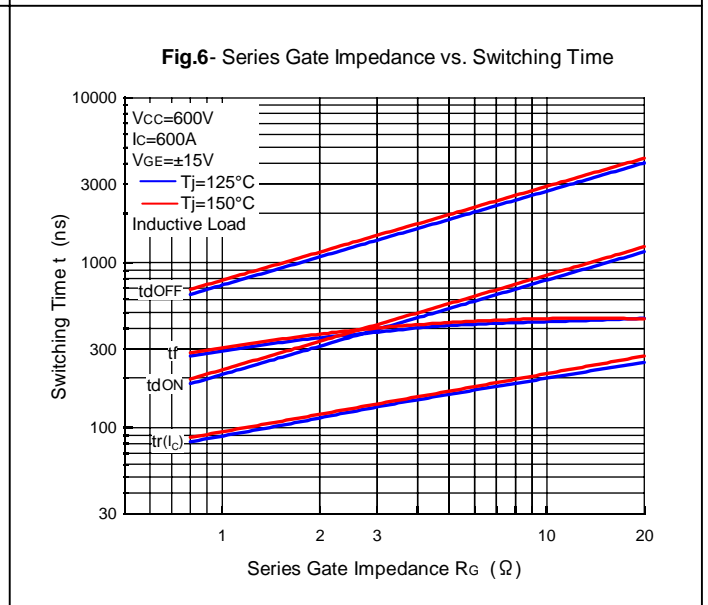
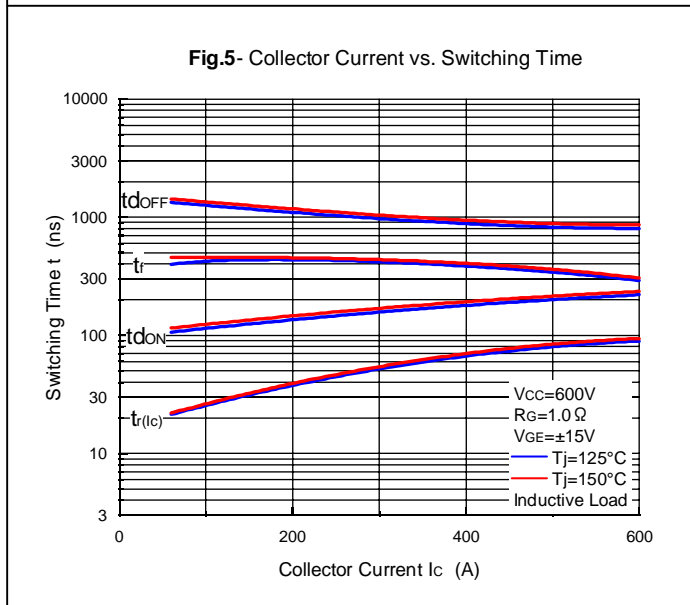
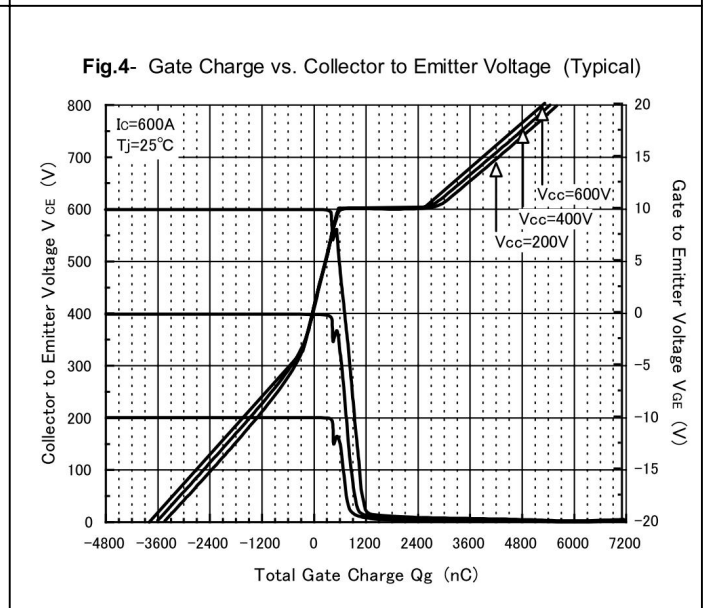
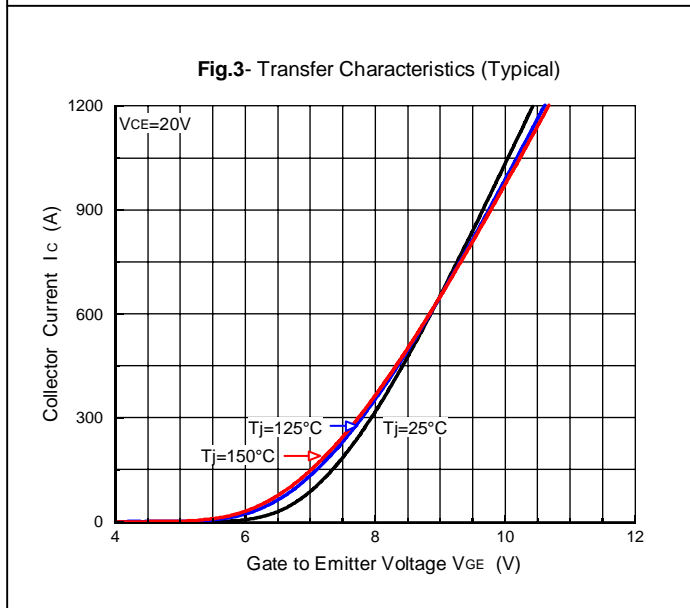
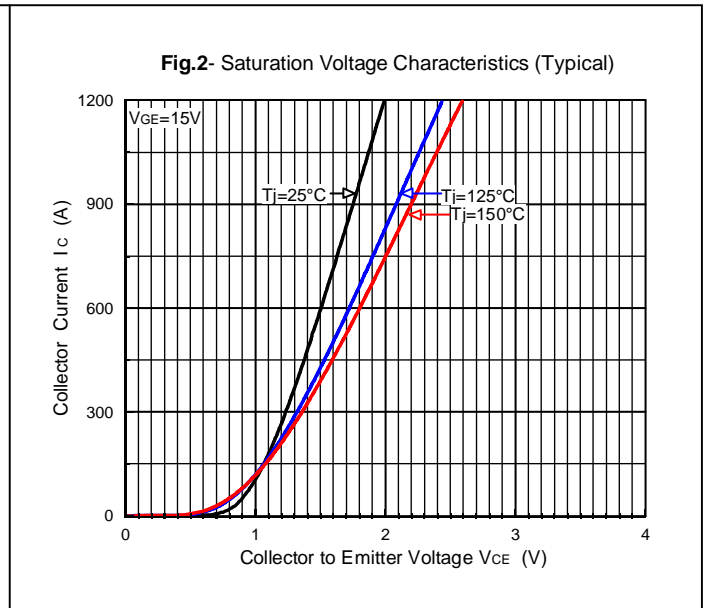
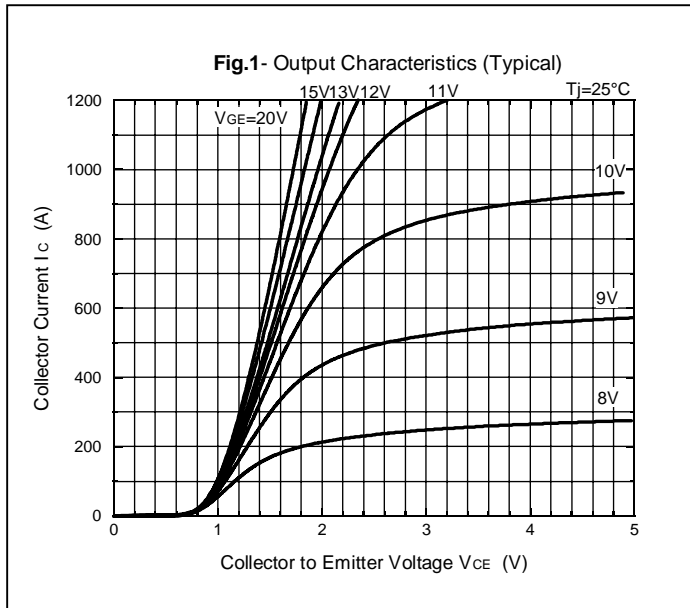
□ 電 氣 的 特 性 : **ELECTRICAL CHARACTERISTICS** (at  $T_j=25^\circ\text{C}$  unless otherwise specified)

Characteristic		Symbol	Test Condition	Min.	Typ.	Max.	Unit	
IGBT	コレクタ遮断電流 Collector-Emitter Cut-Off Current	$I_{CES}$	$V_{CE}=1200V, V_{GE}=0V$	—	—	1.0	mA	
	ゲート漏れ電流 Gate-Emitter Leakage Current	$I_{GES}$	$V_{GE}=\pm 20V, V_{CE}=0V$	—	—	1.0	$\mu\text{A}$	
	コレクタ・エミッタ間飽和電圧 Collector-Emitter Saturation Voltage	$V_{CE(sat.)}$	$I_C=600A, V_{GE}=15V$ (chip level)	$T_j=25^\circ\text{C}$	—	1.50	2.00	V
				$T_j=125^\circ\text{C}$	—	1.70	—	
				$T_j=150^\circ\text{C}$	—	1.80	—	
	ゲートしきい値電圧 Gate-Emitter Threshold Voltage	$V_{GE(th.)}$	$V_{CE}=10V, I_C=20mA$	4.8	—	7.0	V	
	入力容量 Input Capacitance	$C_{ies}$	$V_{CE}=25V, V_{GE}=0V, f=1MHz$	—	60.0	—	nF	
	出力容量 Output Capacitance	$C_{oes}$		—	1.72	—		
	帰還容量 Reverse Transfer Capacitance	$C_{res}$		—	1.40	—		
	ゲート電荷量 Gate Charge	$Q_g$	$V_{CC}=600V, I_C=600A, V_{GE}=-15\sim+15V$	—	6600	—	nC	
スイッチング時間 Switching Time	上昇時間 Rise Time	$t_r$	$V_{CC}=600V$ Inductive Load $I_C=600A$ $R_G=1.0\Omega$ $V_{GE}=\pm 15V$ $T_j=150^\circ\text{C}$	—	90	—	ns	
	ターンオン遅延時間 Turn-on Delay Time	$t_d(on)$		—	220	—		
	下降時間 Fall Time	$t_f$		—	300	—		
	ターンオフ遅延時間 Turn-off Delay Time	$t_d(off)$		—	800	—		
順電圧 Peak Forward Voltage	$V_F$	$I_F=600A, V_{GE}=0V$ (chip level)	$T_j=25^\circ\text{C}$	—	2.00	2.60	V	
			$T_j=125^\circ\text{C}$	—	1.98	—		
			$T_j=150^\circ\text{C}$	—	1.95	—		
逆回復時間 Reverse Recovery Time	$t_{rr}$	$V_{CC}=600V$ Inductive Load $I_F=600A$ $R_G=1.0\Omega$ $V_{GE}=\pm 15V$ $T_j=150^\circ\text{C}$	—	320	—	ns		

 □ 熱 的 特 性 : **THERMAL CHARACTERISTICS**

Characteristic		Symbol	Test Condition	Min.	Typ.	Max.	Unit
熱 抵 抗 Thermal Resistance	IGBT	$R_{th(j-c)}$	Junction to Case Per 1 Arm (Tc測定点:チップ直下)	—	—	0.048	$^\circ\text{C}/\text{W}$
	FWD			—	—	0.075	

特性图 : CHARACTERISTICS CURVES



特性 : CHARACTERISTICS CURVES

